



JUNE 2025

# Pillsbury's Integrated Data Center Capabilities



# Data Center Capabilities

## Pillsbury Counsels the *Entire Data Centers Ecosystem*.

Legal support is essential to acquiring, developing, financing, powering, operating, and protecting data centers. What may not be readily apparent is the additional value derived from deploying that legal support in an **integrated fashion**, with specialty areas tailored to the future deployment needs for artificial intelligence applications.

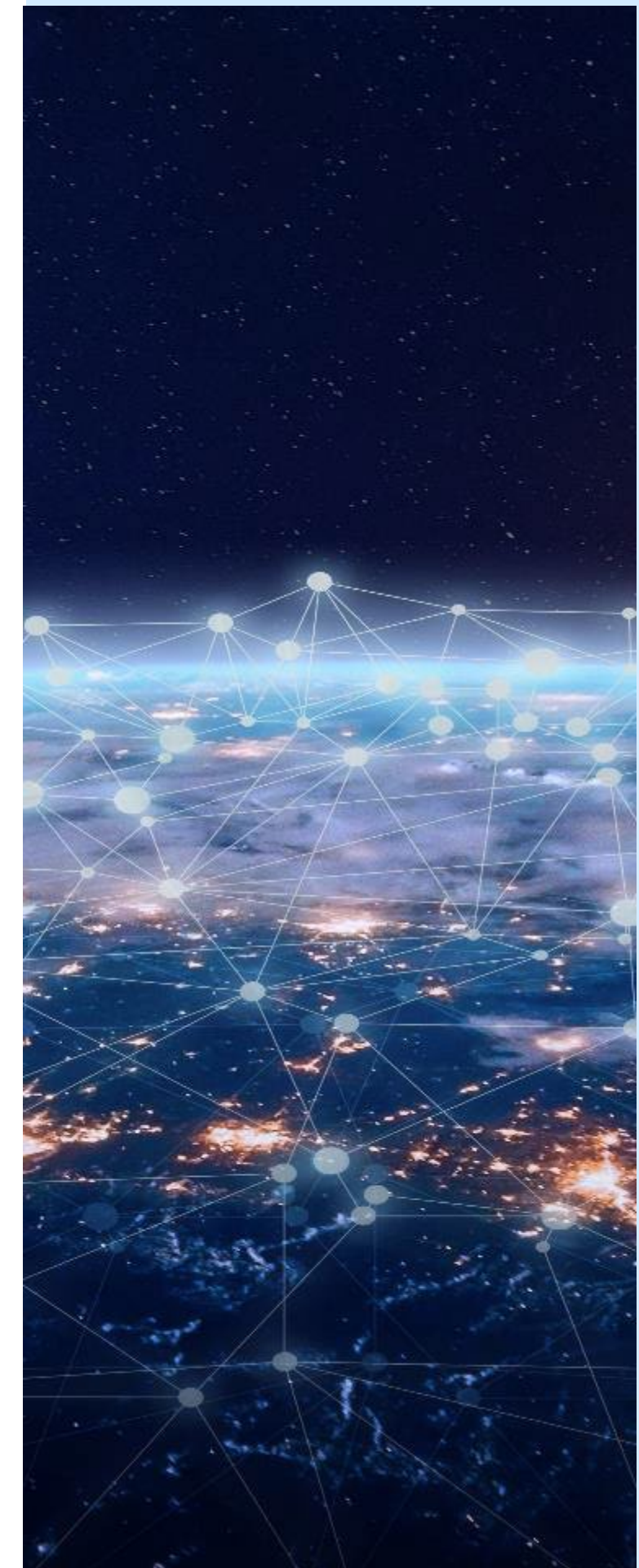
Pillsbury's Data Centers team is composed of legal professionals and consultants who regularly work with one another **across the traditional legal disciplines** on data center opportunities and challenges.

- We work with major real estate developers and all types of funds and other sources of equity capital and debt financing in the space and we have a first-tier construction practice that can advise during the entire life-cycle of a project.
- We have strong offerings for innovative energy sourcing, given our decades of experience in nuclear fission/fusion, gas/CCS, renewables and storage solutions, both on and off the grid.
- Our team of counselors is fully equipped to advise on the full range of tax and incentives, security, technology licensing, and compliance issues.
- We work for both proprietors and users of data centers and understand the larger goals and needs of those who depend on them and are well versed in service and co-location arrangements for the essential roles that data centers play today.

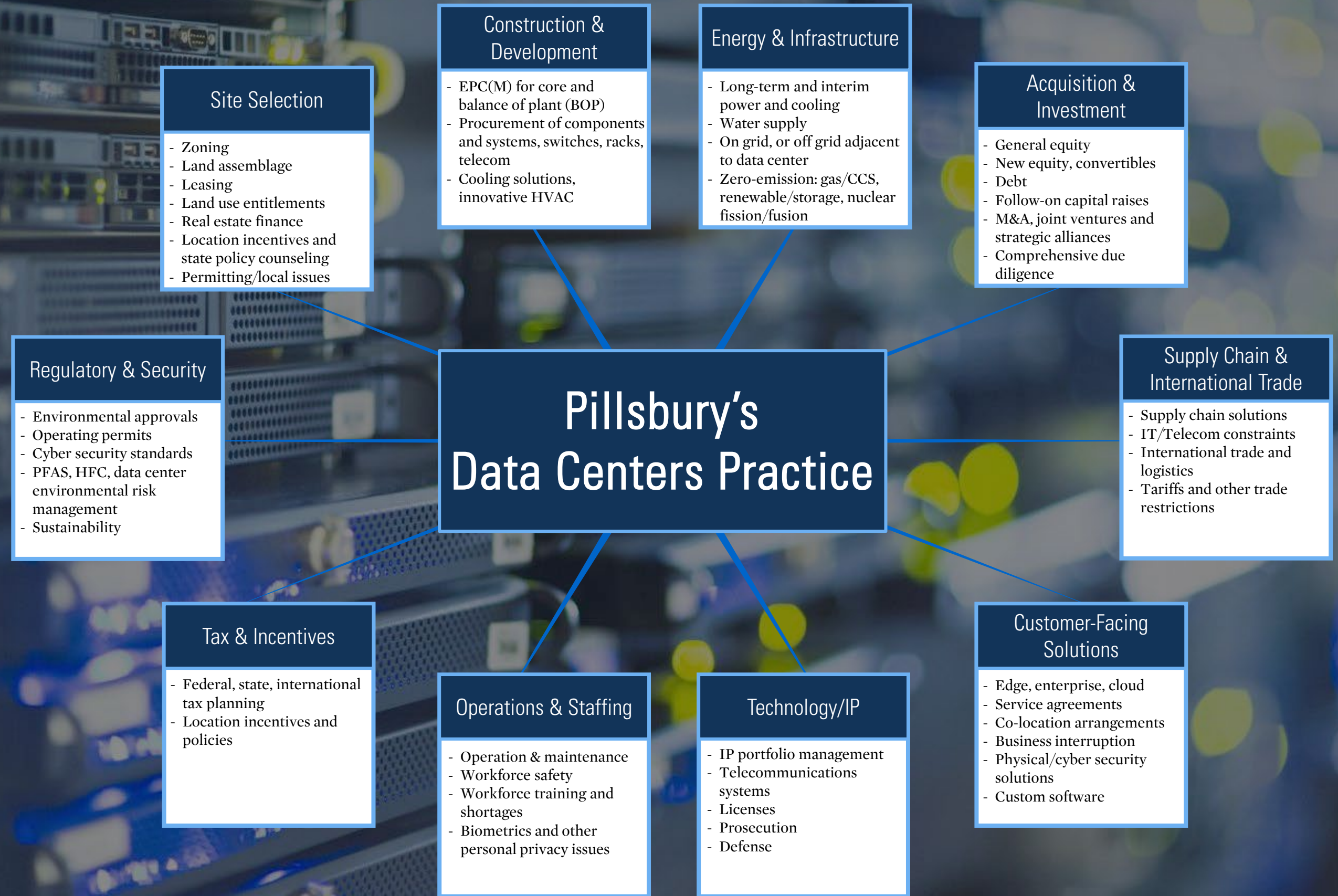
[Most Innovative Energy Law Firm Globally – Two Years in a Row](#)



Highly Ranked for Energy Transition, Construction,  
Outsourcing, Technology and Electricity Finance



# THE ECOSYSTEM



# TEAM MEMBERS

## Pillsbury's Data Centers Practice

### Site Selection

- [Adam Weaver](#)
- [RJ Davis](#)
- [Andrew Weiner](#)
- [Rachel Horsch](#)
- [Noa Clark](#)
- [Bob Herr](#)
- [Craig de Ridder](#)

### Construction & Development

- [Jeffrey Gans](#)
- [Jamie Bobotek](#)
- [Rob James](#)
- [Allan Van Vliet](#)
- [Arielle Murphy](#)

### Energy & Infrastructure

- [Rob James](#)
- [Alicia McKnight](#)
- [Jeff Merrifield](#)
- [Michael Reese](#)
- [Ashleigh Myers](#)
- [Will Fork](#)
- [Sid Fowler](#)

### Acquisition & Investment

- [Steve Amdur](#)
- [David Baxter](#)
- [Robbie Stein](#)
- [Dave Lillevand](#)
- [Rob James](#)
- [Alicia McKnight](#)
- [Shellka Arora-Cox](#)

### Regulatory & Security

- [Jeewon Serrato](#)
- [Shruti Arora Bhutani](#)
- [Steven Farmer](#)
- [Brian Finch](#)
- [Mike McDonough](#)
- [Reza Zarghamee](#)
- [Ashleigh Myers](#)

### Supply Chain & International Trade

- [Nancy Fischer](#)
- [Benjamin Cote](#)
- [Aaron Hutman](#)
- [Jenny Liu](#)
- [Simon Barrett](#)
- [Olivia Matsushita](#)

### Tax & Incentives

- [Don Lonczak](#)
- [Nora Burke](#)
- [Aimee Ghosh](#)

### Operations & Staffing

- [Tony Phillips](#)
- [Jean Kuei](#)
- [Stacie Yee](#)
- [Jeewon Serrato](#)
- [Shruti Bhutani Arora](#)

### Technology/IP

- [Dave Jakopin](#)
- [Josh Tucker](#)
- [Ed Cavazos](#)

### Customer-Facing Solutions

- [Brooke Daniels](#)
- [Jeewon Serrato](#)
- [Elizabeth Zimmer](#)
- [Brittney Sandler](#)
- [Aaron Oser](#)
- [Phil Evans \(Consultant\)](#)
- [Joe Nash \(Consultant\)](#)

# Our Offices

## UNITED STATES

**Austin**  
401 Congress Ave, Ste. 1700  
Austin, TX 78701  
+1.512.580.9600

**Houston**  
609 Main Street, Ste. 2000  
Houston, TX 77002  
+1.713.276.7600

**Los Angeles**  
725 S. Figueroa St., 36<sup>th</sup> Floor  
Los Angeles, CA 90017  
+1.213.488.7100

**Miami**  
600 Brickell Avenue, Ste. 3100  
Miami, FL 33131  
+1.786.913.4900

**New York**  
31 West 52nd Street  
New York, NY 10019  
+1.212.858.1000

**Northern Virginia**  
7900 Tysons One Place, Ste 500  
Tysons, VA 22102  
+1.703.770.7900

**Palm Beach**  
324 Royal Palm Way, Ste. 220  
Palm Beach, FL 33480-4309  
T: +1.561.232.3300

**Sacramento**  
500 Capitol Mall, Ste. 1800  
Sacramento, CA 95816  
+1.916.329.4700

**San Diego**  
11682 El Camino Real, Ste. 200  
San Diego, CA 92130  
+1.858.509.4000

**San Francisco**  
Four Embarcadero Center, 22<sup>nd</sup> Floor  
San Francisco, CA 94111  
+1.415.983.1000

**Silicon Valley**  
2550 Hanover Street  
Palo Alto, CA 94304  
+1.650.233.4500

**Washington, DC**  
1200 Seventeenth Street, NW  
Washington, DC 20036  
+1.202.663.8000

## EUROPE

**London**  
Level 34  
100 Bishopsgate  
London, EC2N 1HQ  
+44.207.847.9500

## MIDDLE EAST

**Doha**  
Office 855, Tower 2  
Globex Business Center  
Doha, Qatar  
T: +974.4020.6655

## ASIA

**Beijing**  
No. 1 Jian Guo Men Wai Avenue  
Beijing 100004  
+86.10.8572.1188

**Hong Kong**  
18 Chater Road, Ste 1704  
Central, Hong Kong  
+852.3959.7500

**Shanghai**  
222 Yan An Road East, Ste 1115  
Huangpu District, Shanghai, 200002  
+86.21.6137.7999

**Taipei**  
No. 100, Songren Road, Xinyi District  
Taipei 100, Taiwan  
+88.62.8729.5858

**Tokyo**  
4-1 Marunouchi 1-chome  
Chiyoda, Tokyo 100-0005  
+81.3.6268.6710

## GLOBAL OPERATIONS

333 Commerce Street, Ste 1300  
Nashville, TN 37201  
+1.615.622.3400